

Wallbeds  
"n" More

A comfortable extra bed for any room!

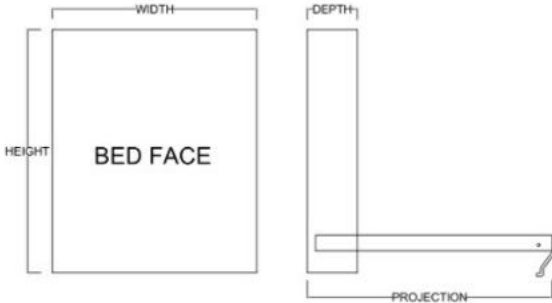
# Farmington

Heartland  
Collection

Available in Horizontal and Vertical

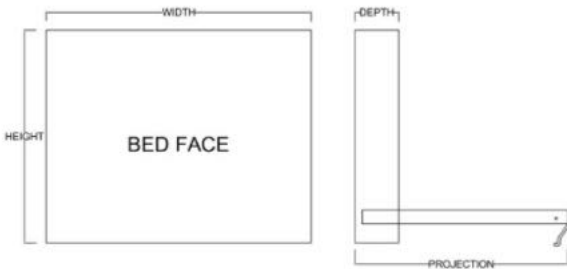


Vertical



Size	Height	Width	Depth	Projection
Twin	82 3/4"	45 1/2"	18 3/4"	81 7/8"
XL Twin	87 3/4"	45 1/2"	18 3/4"	86 7/8"
Full/Double	82 3/4"	60 1/2"	18 3/4"	81 7/8"
Queen	87 3/4"	66 1/2"	18 3/4"	86 7/8"

Horizontal



Size	Height	Width	Depth	Projection
Twin	47 1/2"	80"	16 5/8"	44 5/8"
XL Twin	47 1/2"	85"	16 5/8"	44 5/8"
Full/Double	62 1/2"	80"	16 5/8"	59 5/8"
Queen	68 1/2"	85"	16 5/8"	65 5/8"

## Finishes, Crown Molding and Lighting

Maple



Red Oak



Paint



Weathered



STANDARD CROWN MOLDING (INCLUDED)



SQUARE CROWN MOLDING (INCLUDED)



\*LARGE ANGLED CROWN MOLDING (UPGRADE)



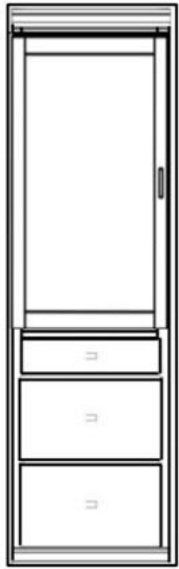
LED LIGHTING



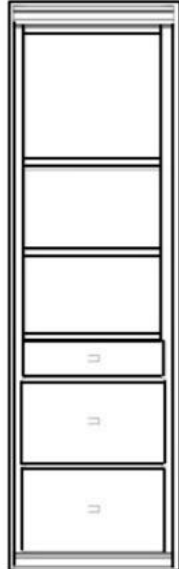


# Cabinet Options

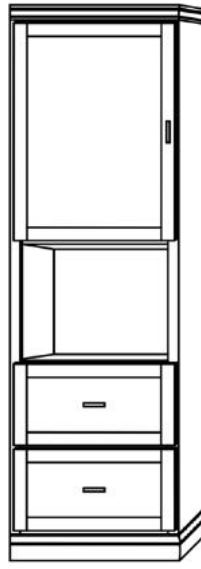
All cabinets and nightstands are available in 3 widths: 18", 24" or 30"  
File drawer cabinets only come in 24" wide



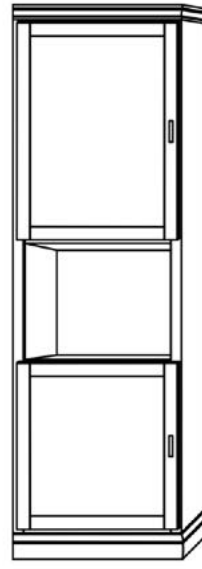
VC 212  
(File Drawers)



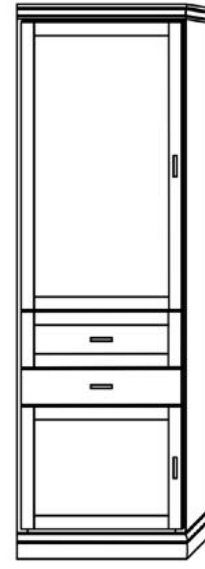
VC 211  
(File Drawers)



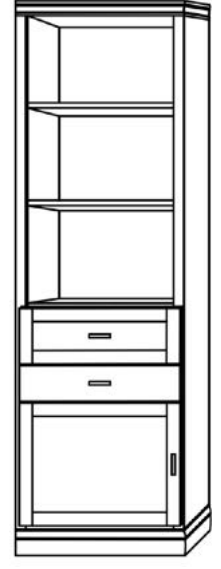
VC 209



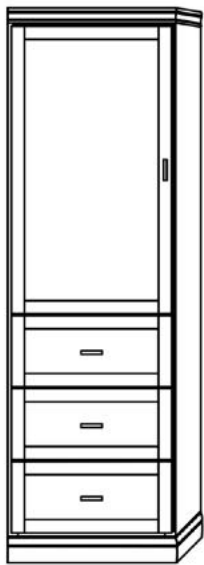
VC 208



VC/HC 207



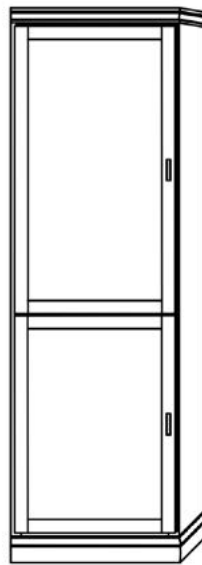
VC/HC 206



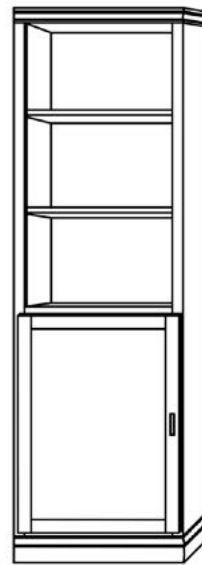
VC/HC 205



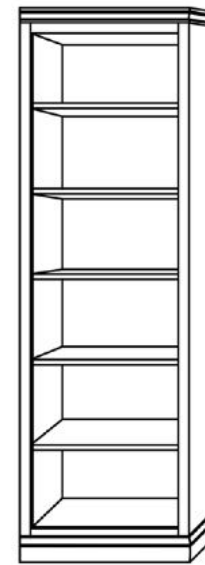
VC/HC 204



VC/HC 203



VC/HC 202

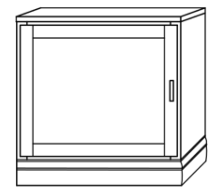


VC/HC 201

## Night Stands



VNS 402

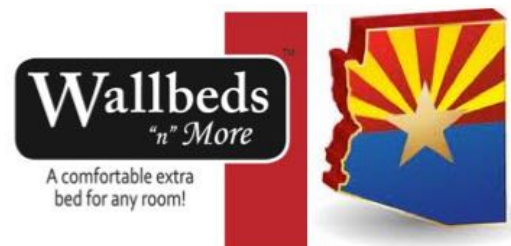


VNS 401

## EXTRAS

- ☆ Cabinet depth is 16 inches (vs bed depth 18.75 inches)
- ☆ Cabinet are 3" inches less in height than the bed
- ☆ Add upper cabinet to horizontal beds
- ☆ ♦Paint/Deluxe Finish - 10% Upcharge
- ☆ ♦Weathered/Premium Finish - 20% Upcharge
- ☆ Rolling Desk (w = same as bed, 24" d, 30" h)
- ☆ Add LED lights
- ☆ Upgrade to "larger" crown molding
- ☆ Add nightstand pullout (⊕ Cabs 204, 205)
- ☆ Change to glass shelves (2 shelves)
- ☆ Add Clothes Valet; Add Extra Shelf
- ☆ Upgrade to MOTORIZED Wallbed

Serving Arizona since 2010  
Locally Owned and Operated



iLoveWallbeds.com